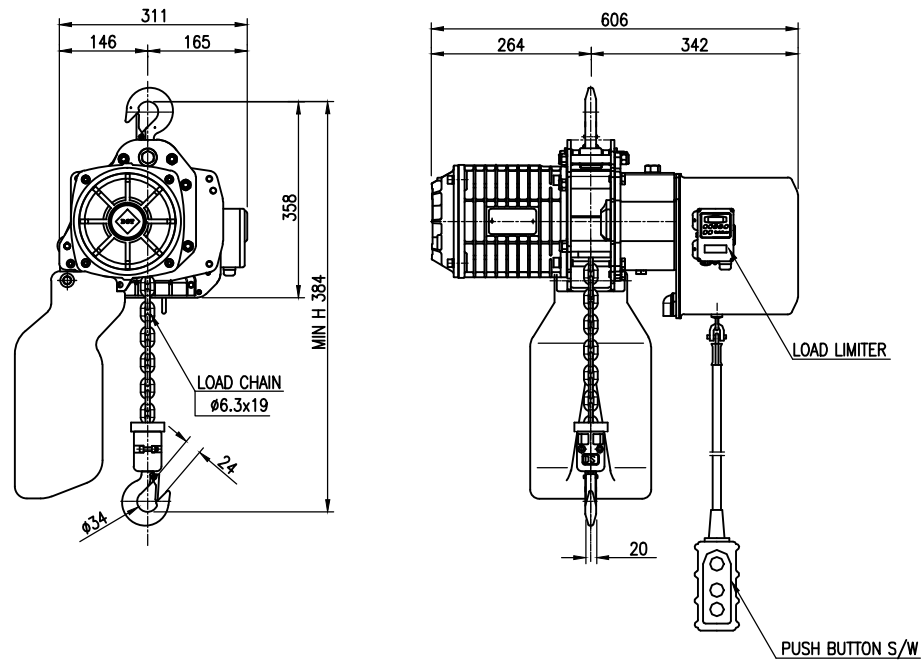


NO	DESCRIPTION	MAT'L	Q'TY	WT(kg)	REMARKS



SPECIFICATION		
HOISTING LOAD	0.5	TON
TESTING LOAD	0.625	TON
LIFTING HEIGHT	4	M
HOISTING	SPEED	1.7-5.2 M/MIN
	MOTOR	0.8 KW x 6P x 1 SET
POWER SUPPLY	AC220/110x1φ x 50/60 Hz	
OPERATING METHOD	P.B type ON . FL	
WEIGHT	63 KG	

TITLE EDSS-0.5S CHAIN HOIST				PROJECTION	
WORK NO		WORK NAME			
SCALE		Q'TY			
1/1		1			
DRAWN	CHECKED	REVIEWED	APPROVED	DRAWING NO	
YOO.M.R	-	LEE. H.J	Y. K	EDSS05S001	
2013.08.30	-	2013.08.30	2013.08.30		
<b>DAESAN INoTEC INC</b>					

REV.NO	DATE	REVISION DESCRIPTION	DRAWN	CHECKED	APPROVED