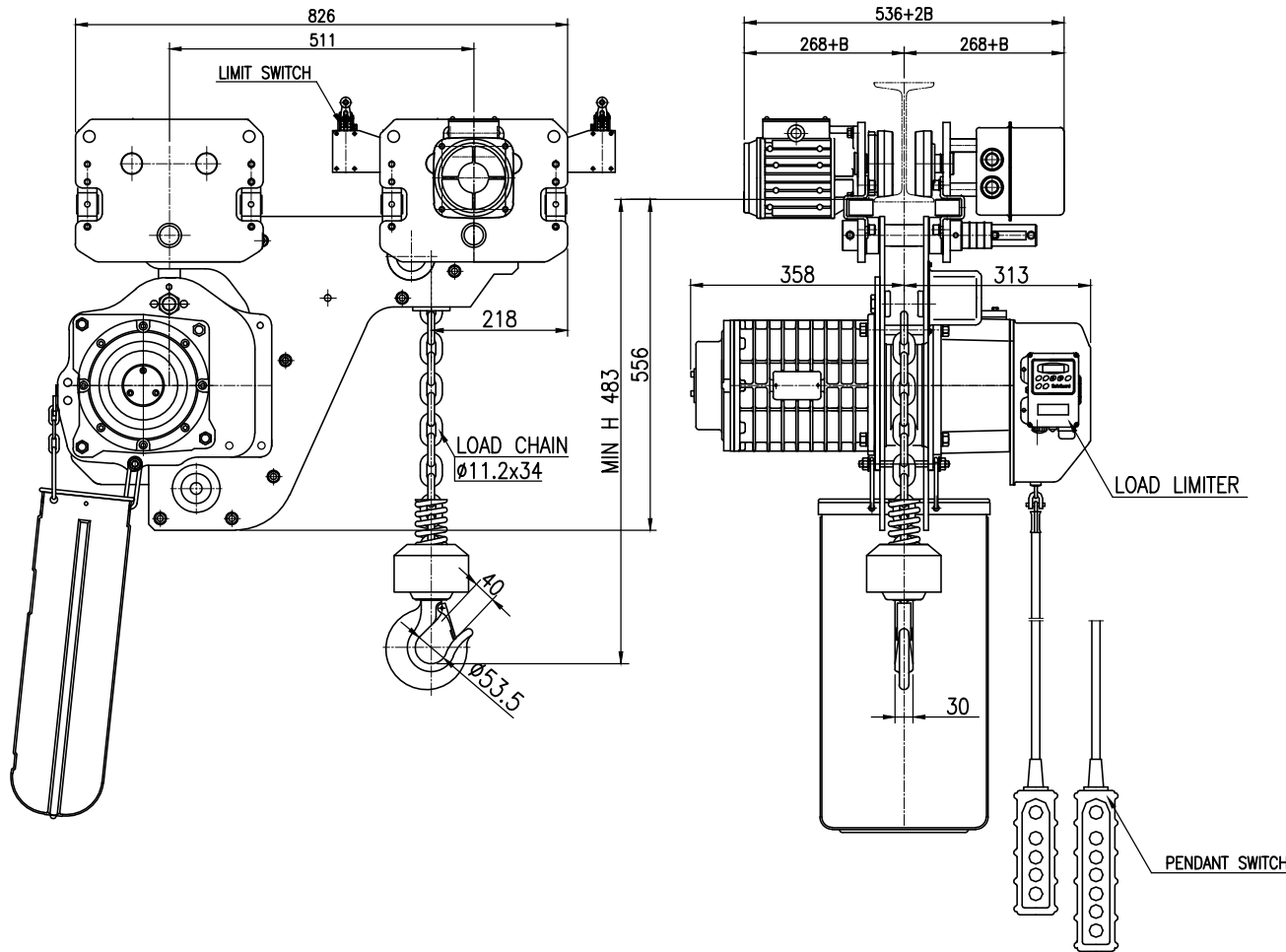


NO	DESCRIPTION	MAT'L	Q'TY	WT(kg)	REMARKS



SPECIFICATION			
HOISTING LOAD	1.9	TON	
TESTING LOAD	2.375	TON	
LIFTING HEIGHT	4	M	
HOISTING	SPEED	8.1	M/MIN
	MOTOR	3.5	KW x 1 SET
TRAVERSING	SPEED	15	M/MIN
	MOTOR	0.4	KW x 1 SET
POWER SUPPLY	AC 220,380,440.x3ø x 60 Hz		
OPERATING METHOD	P.B type ON . FL		
WEIGHT	222 KG		
I-BEAM SIZE	100-150 MM		

\* ADJUSTING COLLAR 4EA(외측) x 2SET

NOTE

\* B는 BEAM 변동치수 치수임.

\* ROLLER DIA : Ø110

\* LIMIT SWITCH : OPTION

\* 본 도면은 I-BEAM 100MM 기준임

TITLE				PROJECTION	
DSHM-1.9S CHAIN HOIST					
WORK NO	WORK NAME			SCALE	Q'TY
				1/1	1
DRAWN	CHECKED	REVIEWED	APPROVED	DRAWING NO	
H.J	-	LEE	Y. K	DSH190200	
2022.12.01	-	2022.12.01	2022.12.01		
<b>DAESAN INoTEC INC</b>					

도면에 지시되지 않은 일반공차						
가공법	치수	3-6	6-30	30-120	120-315	315-1000
선	삭	±0.1	±0.2	±0.3	±0.5	±0.8
구멍간	거리	±0.1	±0.2	±0.3	±0.5	±0.8

REV.NO	DATE	REVISION DESCRIPTION	DRAWN	CHECKED	APPROVED