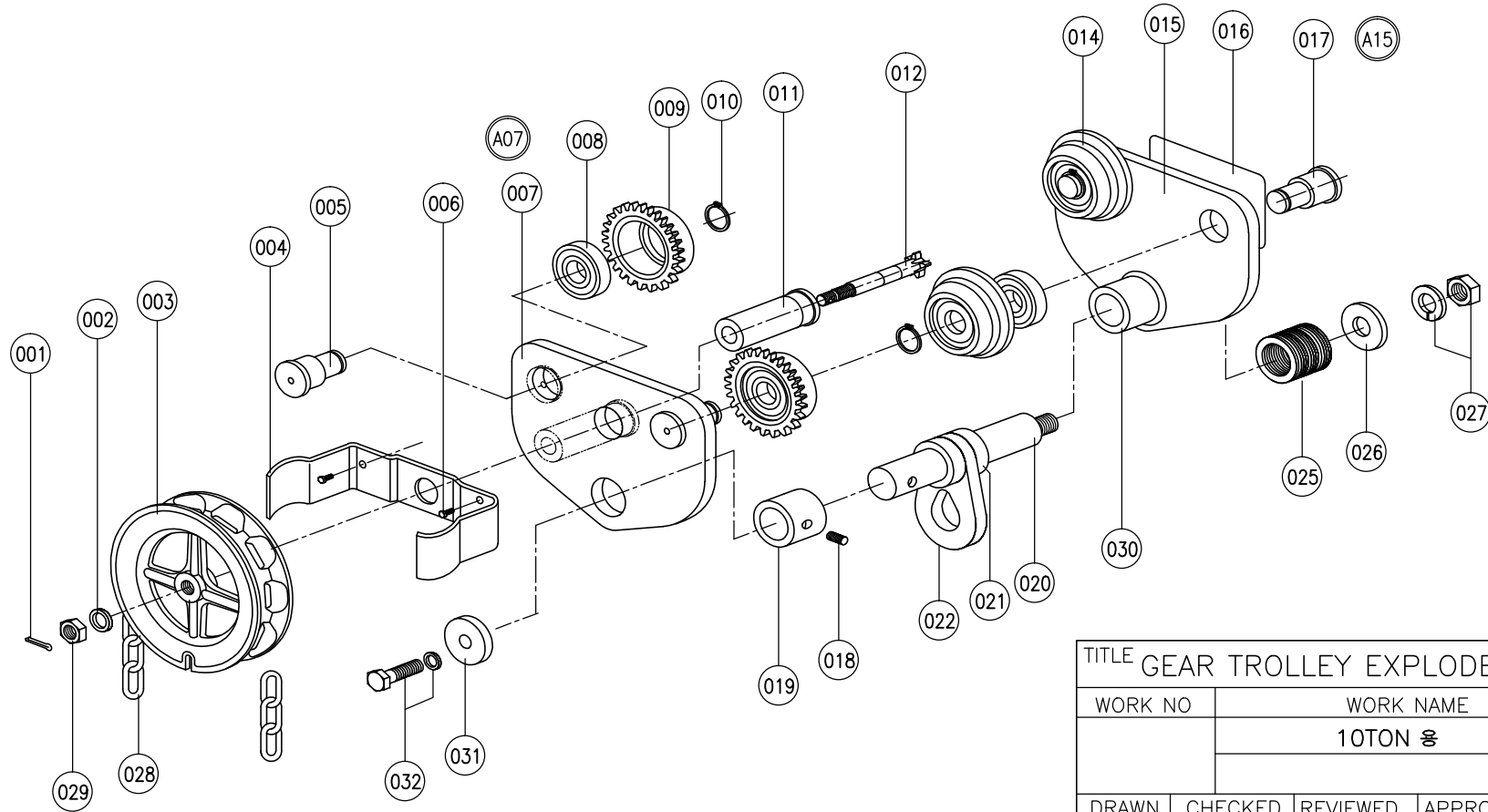


025	ADJUST WASHER	16		011	HOUSING	1		NO	DESCRIPTION	Q' TY	WT (kg)	REMARKS
026	SIDE WASHER	1		012	PINION SHAFT	1		001	COTTER PIN	1		
027	HEX NUT S/W	1	M30	014	ROLLER	1		002	PLAIN WASHER	1		
028	HAND CHAIN	1		015	PLAIN SIDE PLATE ASS'Y	1		003	HANDLE WHEEL	1		
029	PINION NUT	1		016	NAME PLATE	1		004	GUIDE PLATE	1		
030	BRACKET B	1		017	P-STUD	2		005	G-STUD	2		
031	SIDE WASHER	1		018	SET SCREW	1	M12x25	006	WRENCH BOLT S/W	2		M6x15
032	HEX BOLT S/W	1	M16x30	019	BRACKET A	1		007	GEAR SIDE PATE	1		
ASSEMBLY				020	STAY	1		008	BALL BEARING	4		6206ZZ
A07	GEAR SIDE PLATE ASS'Y	1	007,005,011,019	021	RING	2		009	GEAR TROLLEY	2		
A15	PLAIN SIDE PLATE ASS'Y	1	015,017,030	022	CENTER PLATE	1		010	SNAP RING	4		S30



TITLE GEAR TROLLEY EXPLODE VIEW				PROJECTION	
WORK NO		WORK NAME			
		10TON ㉡		SCALE	Q'TY
				N S	1
DRAWN	CHECKED	REVIEWED	APPROVED	DRAWING NO	
YOO.M.R	-	LEE. H.J	Y. K	DSGT10E01	
2013.07.15	-	2013.07.15	2013.07.15		

REV.NO	DATE	REVISION DESCRIPTION	DRAWN	CHECKED	APPROVED

DAESAN INoTEC INC