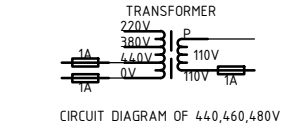
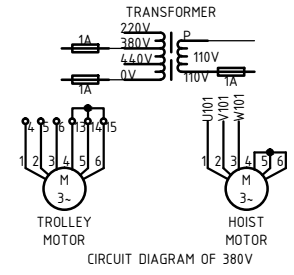
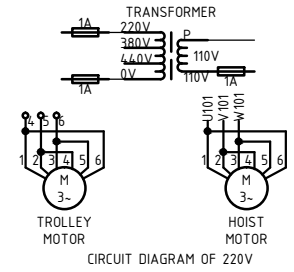


MCCB (1S,2W)	MCCB (0.5S)
220V 30A	220V 20A
380V 15A	380V 10A
440V 15A	440V 10A
460V 15A	460V 10A
480V 15A	480V 10A



- NOTE**
- POWER WIRE : 2.5SQ BLACK
 - CONTROL WIRE : 1.5SQ RED
 - EARTH WIRE : 2.5SQ GREEN
- MOTOR SPEC.**
- HOIST :
 - 3φ 1.8kW 4P, 6P (1S,2W)
 - 3φ 0.8kW 4P, 6P (0.5S)
 - TROLLEY : 3φ 0.4kW 4P, 6P
- ABBREVIATION**
- CT : CURRENT TRANSFORMER
 EMPR : ELECTRONIC MOTOR PROTECTION RELAY
 DBR : DYNAMIC BRAKING RESISTOR
 TP : THERMAL PROTECTOR
 EM : EMERGENCY
 RD : RED
 BK : BLACK

TITLE				SHEET	
EDST-0.5S,1S,2W				1/1	
3Phase 220,380,440,460,480V 50/60Hz				REVISION NO	
CIRCUIT DIAGRAM				0	
DRAWING	CHECKED	REVIEWED	APPROVED	DRAWING NO	
S.T			Y.K	EDST010E01	
17.09.19			17.09.19		

DAESAN INoTEC INC.