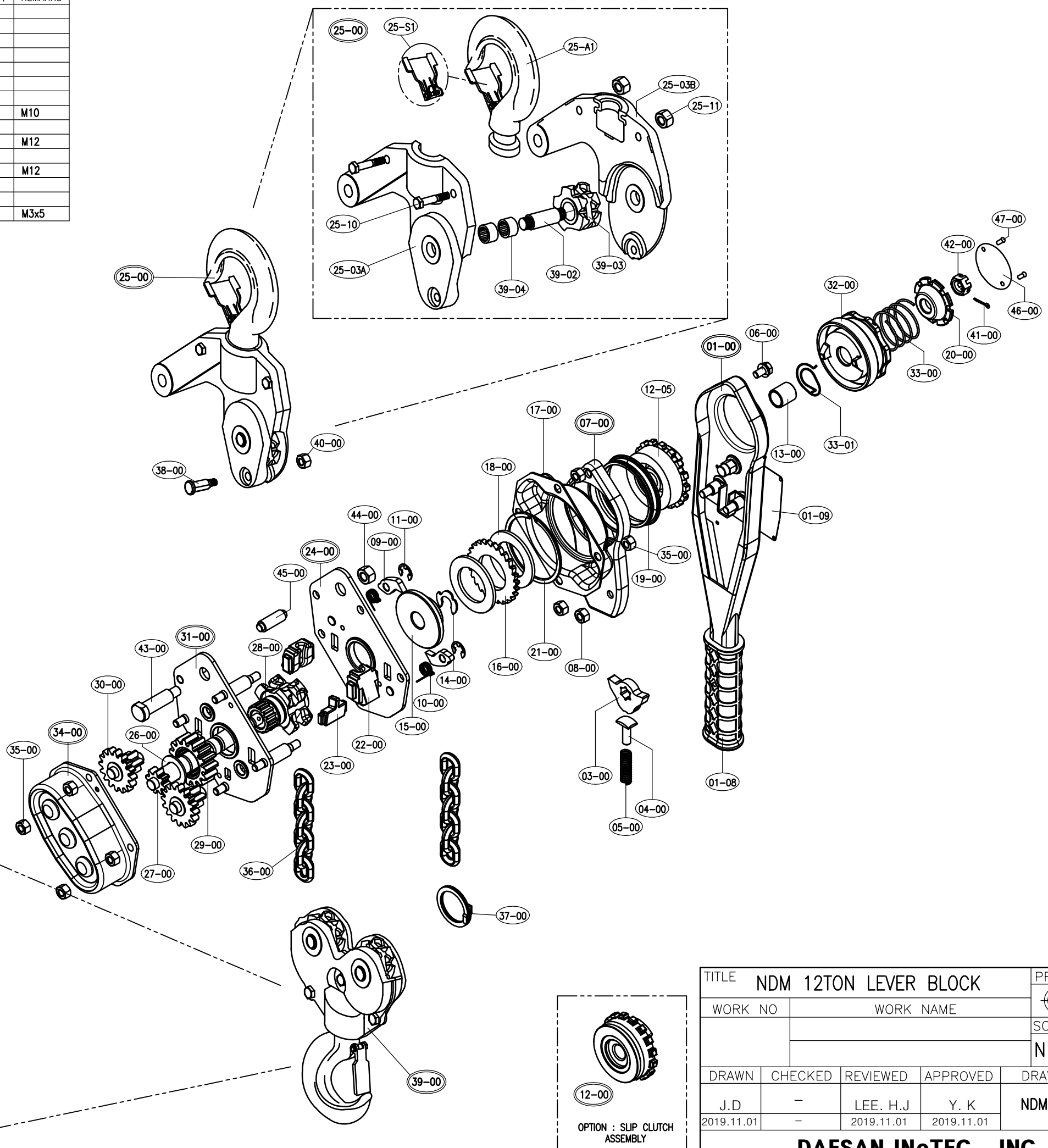


NO	DESCRIPTION	Q'TY	REMARKS	NO	DESCRIPTION	Q'TY	REMARKS
01-00	LEVER ASS'Y	1		37-00	END RING	1	
01-08	RUBBER GRIP	1		38-00	HOOK BOLT	1	
01-09	NAME PLATE	1		39-00	BOTTOM HOOK ASS'Y	1	
03-00	CHANGE PAWL	1		39-01	BOTTOM FRAME	2	
04-00	PUSH PIN	1		39-02	AXLE	3	
05-00	PUSH SPRING	1		39-03	SHEAVE	3	
06-00	BOLT SPRING WASHER	1	M6x15	39-04	NEEDLE BEARING	6	
07-00	LEVER COVER ASS'Y	1		40-00	U NUT	1	M10
08-00	U NUT	2	M8	41-00	COTTER PIN	1	
09-00	PAWL	2		42-00	SLOTTED NUT	1	M12
10-00	PAWL SPRING	2		43-00	TOP HOOK PIN	1	
11-00	SNAP RING	2	E-12	44-00	U NUT	1	M12
12-00	CLUTCH ASS'Y	1	OPTION	45-00	HANGER PIN	1	
12-05	CHANGE GEAR	1		46-00	GRIP RING COVER	1	
13-00	COLLAR	1		47-00	MACHINE SCREW	2	M3x5

14-00	SNAP RING	1	T5304-62
15-00	HUB	1	
16-00	RATCHET GEAR	1	
17-00	BRAKE COVER	1	
18-00	DISC	2	#64x#40.5x3.5
19-00	COVER BUSH	1	
20-00	SPRING RECEIVER	1	
21-00	SNAP RING	1	C-75
22-00	CHAIN GUIDE	2	
23-00	STRIPPER	1	
24-00	LEVER SIDE PLATE ASS'Y	1	
25-00	TOP HOOK ASS'Y	1	
25-A1	HOOK ASS'Y	2	
25-S1	SAFETY LATCH SET	2	
25-03A	TOP FRAME A	1	
25-03B	TOP FRAME B	1	
25-10	HEX BOLT	5	M12x45
25-11	HEX NUT	5	M12
26-00	PINION SHAFT WASHER	1	
27-00	PINION SHAFT	1	
28-00	LOAD SHEAVE	1	
29-00	1ST GEAR	1	
30-00	2ND GEAR & 3RD GEAR	2	
31-00	GEAR SIDE PLATE ASS'Y	1	
32-00	GRIP RING	1	
33-00	SPRING	1	
33-01	RETURNING SPRING	1	
34-00	GEAR COVER ASS'Y	1	
35-00	U NUT	8	M10
36-00	LOAD CHAIN	1	



TITLE				PROJECTION	
NDM 12TON LEVER BLOCK					
WORK NO		WORK NAME		SCALE	Q'TY
				N S	1
DRAWN	CHECKED	REVIEWED	APPROVED	DRAWING NO	
J.D	-	LEE. H.J	Y. K	NDM120WE01	
2019.11.01	-	2019.11.01	2019.11.01		
<b>DAESAN INoTEC INC</b>					